

The Buttercup Suite



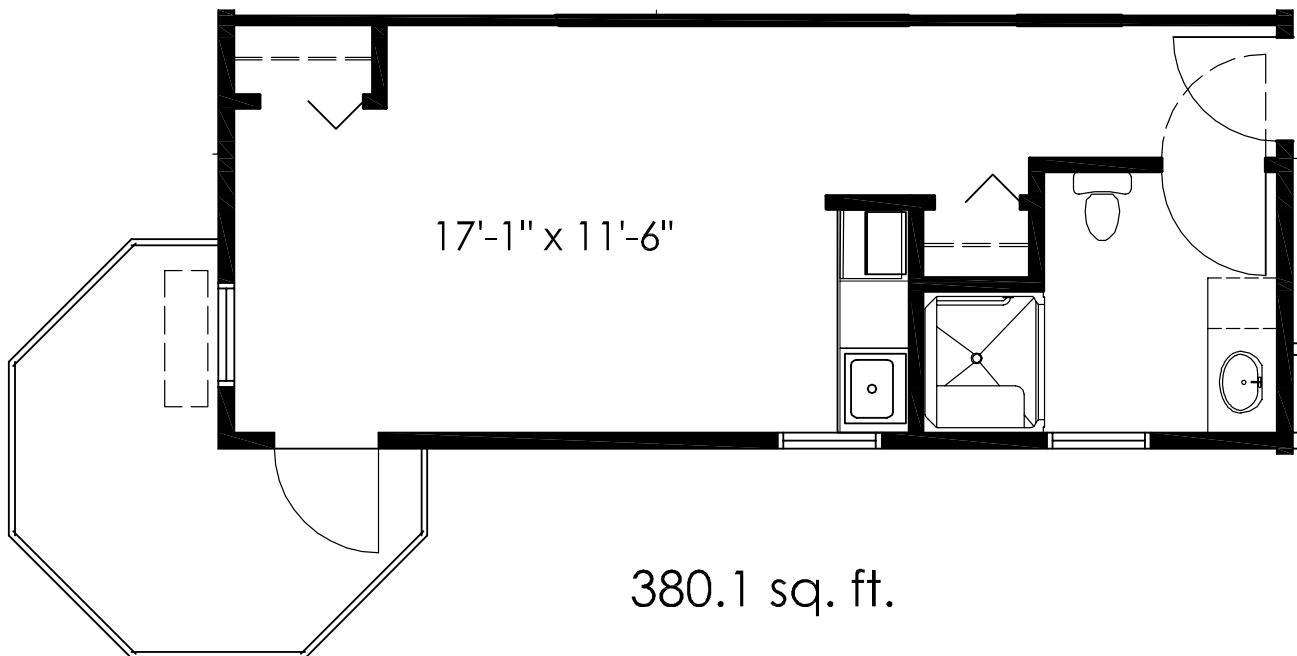
The Buttercup Suite is as petite and appealing as the flower itself. This compact, smartly designed 380 square foot studio maximizes living space with a combined living and bedroom area complete with a desirable wrap around deck.

Comfort and convenience features include easy care simulated wood linoleum, overhead fan light, generous storage and air conditioning.

The suite also has a private bathroom with a large walk-in shower, vanity and a mirrored medicine chest.

The Buttercup has a fully equipped kitchenette, complete with a fridge, microwave, formed laminate counter top patterned after Tuscan marble with ample counter and sink space. Traditional oak cabinetry provides plenty of storage room.

The Buttercup provides many safety features, including grab bars in the shower stall and beside the toilet, fire alarms, smoke detector alarm and 24/7 emergency response.



The Orchid Suite



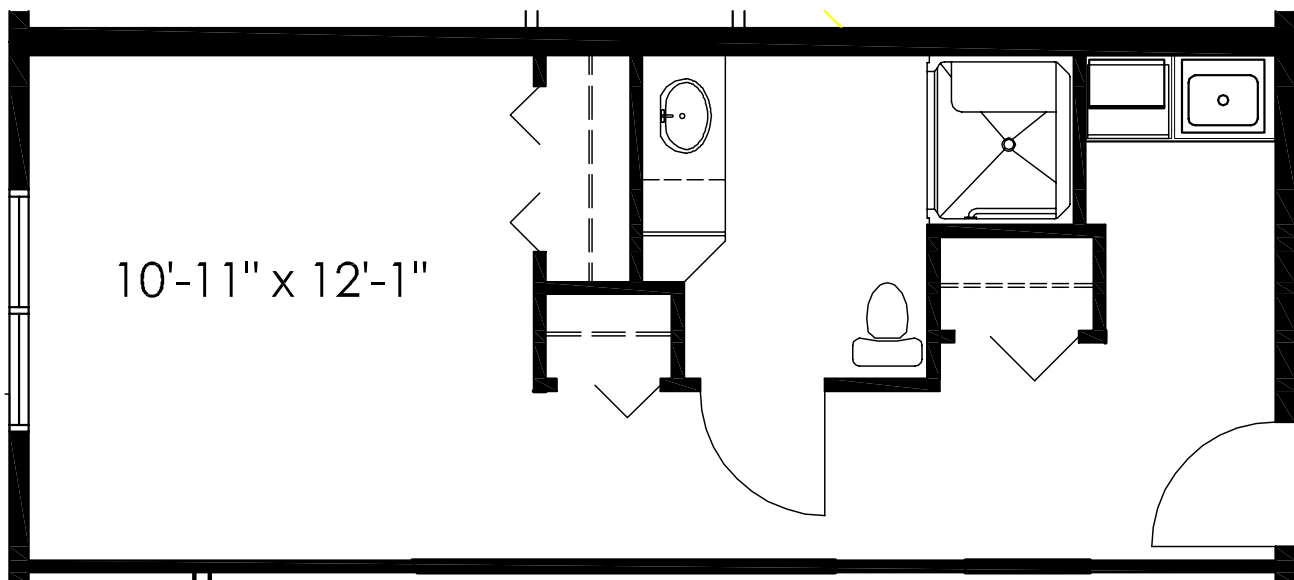
Easy to live in and easy to enjoy, The Orchid Suite is a charming 389 square foot studio, featuring a combined living and bedroom area.

The Orchid boasts a fully equipped kitchenette, complete with a fridge, microwave, formed laminate counter top patterned after Tuscan marble with ample counter and sink space. Traditional oak cabinetry provides plenty of storage room.

There is a large double closet off the living and bedroom area and the suite also has a private bathroom, with a large walk-in shower, a vanity and a mirrored medicine chest.

Comfort and convenience features include easy care simulated wood linoleum, overhead fan light and air conditioning.

The Orchid Suite provides many safety features, including grab bars in the shower stall and beside the toilet, fire alarms, smoke detector alarm and 24/7 emergency response.



389.2 sq. ft.

The Forget Me Not Suite



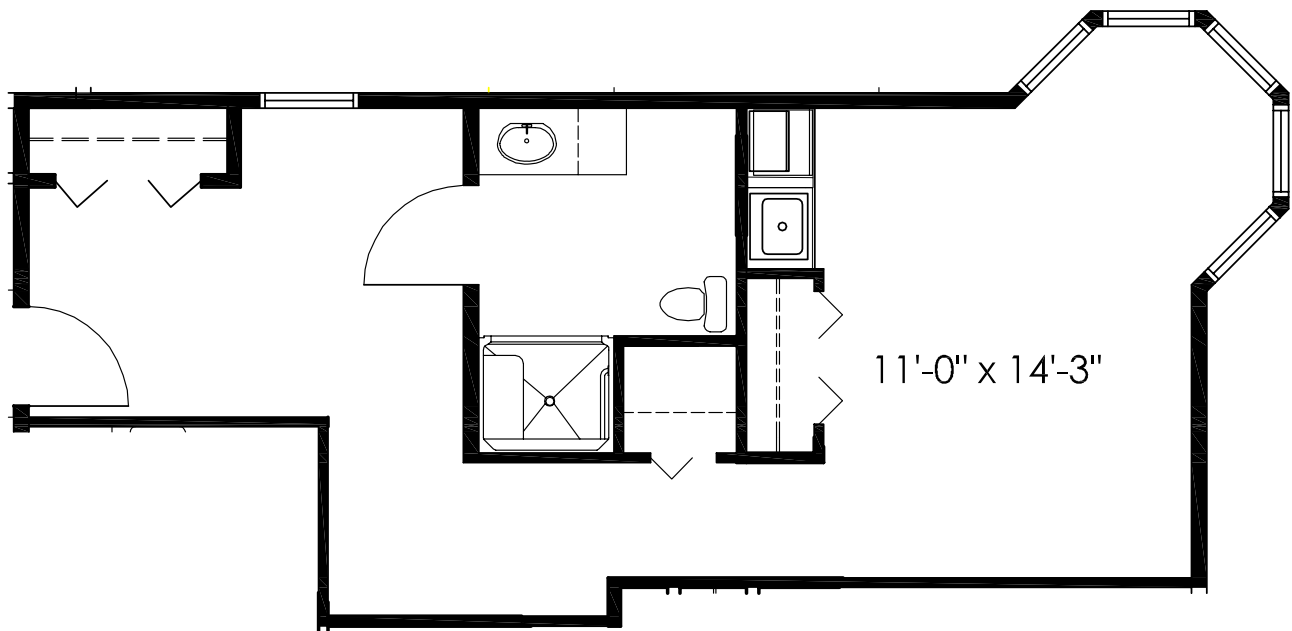
The Forget Me Not is a spacious and sunshine filled 520 square foot suite with a unique layout that provides the convenience of studio living PLUS the privacy of a private den. Large wrap around windows in the living room provide your suite with a bright and airy feel.

Your suite also has a large walk-in shower in the private bathroom together with a vanity and a mirrored medicine chest.

The Forget Me Not has a fully equipped kitchenette, complete with a fridge, microwave, formed laminate counter top patterned after Tuscan marble with ample counter and sink space. Traditional oak cabinetry provides plenty of storage room.

Comfort and convenience features include easy care simulated wood linoleum, overhead fan light, generous storage and air conditioning.

The Forget Me Not provides many safety features, including grab bars in the shower stall and beside the toilet, fire alarms, smoke detector alarm and 24/7 emergency response.



520.4 sq. ft.

The Lady Slipper Suite



The 534 square foot Lady Slipper Suite is as enchanting and unique as its namesake and features a grand sitting room, complete with a stunning wrap-around deck. There's a separate bedroom area and room to roam in The Lady Slipper.

Your private bathroom features a large walk-in shower, a vanity and a mirrored medicine chest.

The Lady Slipper Suite has a fully equipped kitchenette, complete with a fridge, microwave, formed laminate counter top patterned after Tuscan marble with ample counter and sink space. Traditional oak cabinetry provides plenty of storage room.

Comfort and convenience features include easy care simulated wood linoleum, overhead fan light, generous storage and air conditioning.

The Lady Slipper Suite provides many safety features, including grab bars in the shower stall and beside the toilet, fire alarms, smoke detector alarm and 24/7 emergency response.

